

# MODULAR BUILDINGS

**EUROMODUL Ltd.**  
Vojački put 10  
Nova Pazova 22330  
Serbia

**T:** +381 22 328 003  
**F:** +381 22 328 071

[info@euromodul.rs](mailto:info@euromodul.rs)  
[www.euromodul.rs](http://www.euromodul.rs)

# EUROMODUL

Design > Development > Production

**Euromodul Ltd** was founded in 1990.

Today the company is located in:

- Kukuljanovo 335, 51223 Škrljevo - Croatia
- Vojački put 10, 22330 Nova Pazova - Serbia
- Industriestrasse 2 Zofingen - Switzerland

Euromodul Switzerland sells and rents containers on the Swiss market. It currently employs 10 workers and is constantly growing. In Croatia, the factory employs over 80 workers and over 40 in Serbia.

The production process takes place in:

- 14 655 m<sup>2</sup> in Kukuljanovo, with 6400 being closed space
- 21 600 m<sup>2</sup> in Nova Pazova, with 3800 being closed space

The company manufactures modular buildings, low-energy objects, sanitary objects and special projects in modular buildings. Euromodul also produces:

- Various purposes containers
- Street furniture
- Advertising equipment
- Tourist objects
- Special purpose objects

The whole equipment and object production process is based on buyers demands - custom made. Euromodul is equipped and trained to provide transportation and assemble all objects on locations according to customer requirements.



**EXPERIENCE  
KNOWLEDGE  
CONFIDENCE**



**EUROMODUL**  
MODULAR BUILDINGS



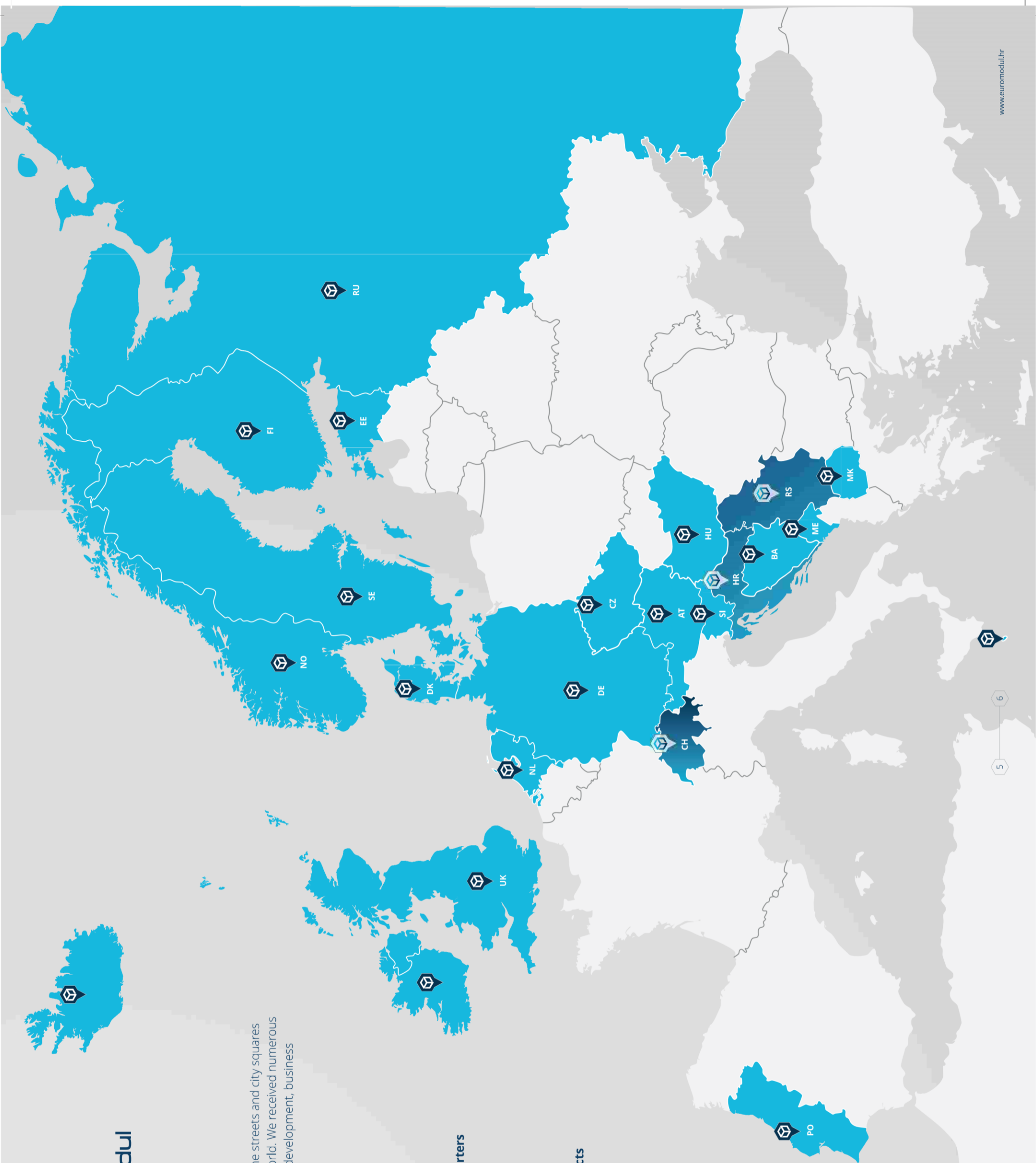
Our products can be found in the streets and city squares across Europe and the entire world. We received numerous acknowledgments for dynamic development, business success, and many innovations.



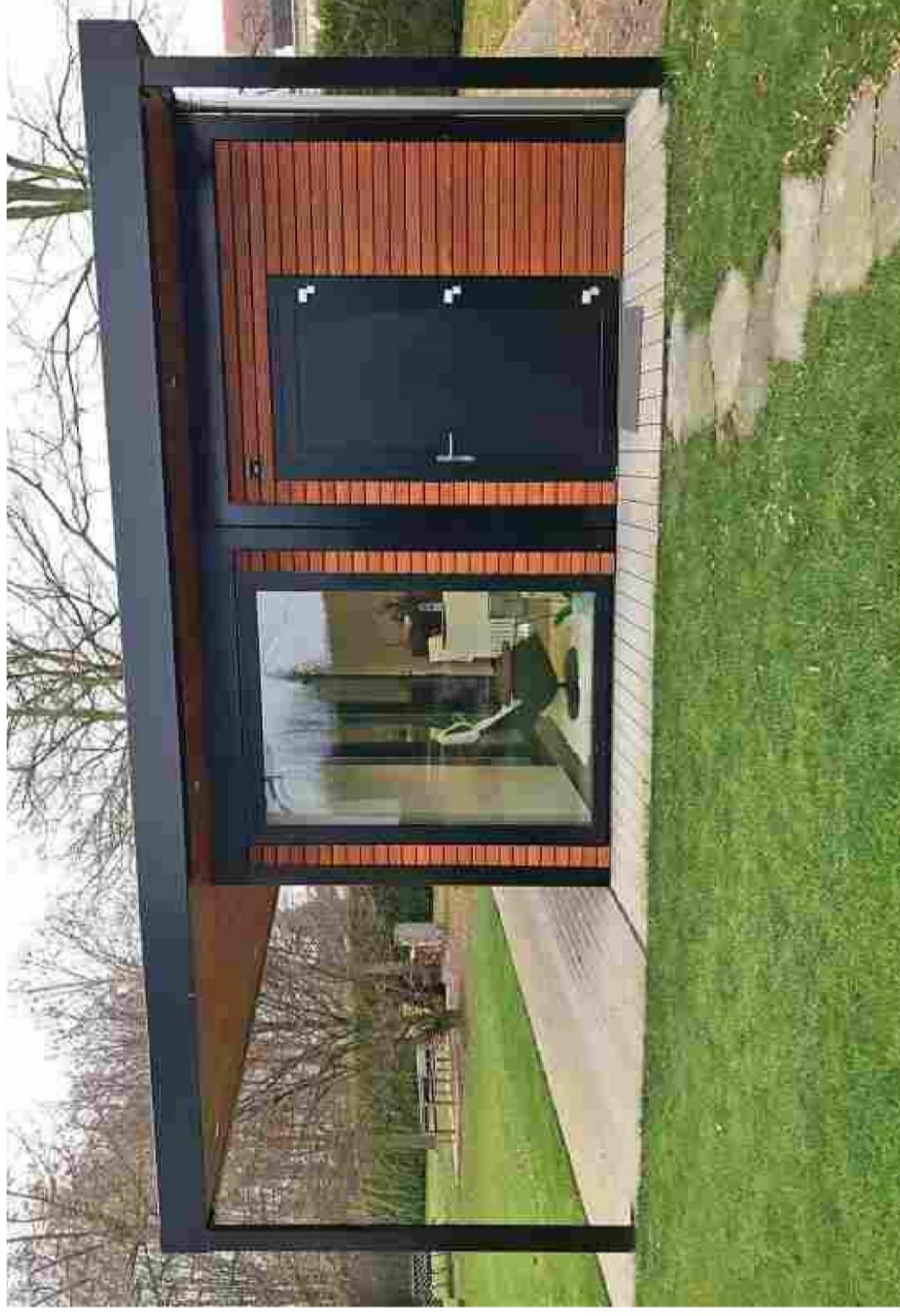
**EUROMODUL headquarters**



**EUROMODUL projects**



— EUROMODUL PREMIUM PROJECTS



## — EUROMODUL EUROSTANDARD PROJECTS



m<sup>2</sup>K

**Wall panels:** 60mm PU panel,  $U = 0.38W / m^2K$

Aluminum doors with 35mm PU panel filling. Glazed upon request.  
PVC windows with shutters,  $U = 1.3W / m^2K$ .

**Note:** Except for the basic design, we offer performance with different thicknesses and types of insulation and fitting of doors and windows with better coefficients. It is possible to make the product with different dimensions and equipment according to client requirements. It is possible to connect the objects horizontally and vertically to the height P+2, and more, according to special requirements.



## — EUROMODUL STANDARD PROJECTS



**Wall panels:** PU panel 60mm,  $U = 0,38W / m^2K$

The doors are aluminum with 35mm PU panel filling, PVC windows with rollers,  $U = 2,3W / m^2K$

It is possible to perform in different dimensions and equipment according to customer requirements.



## PROJECT BLUEPRINT

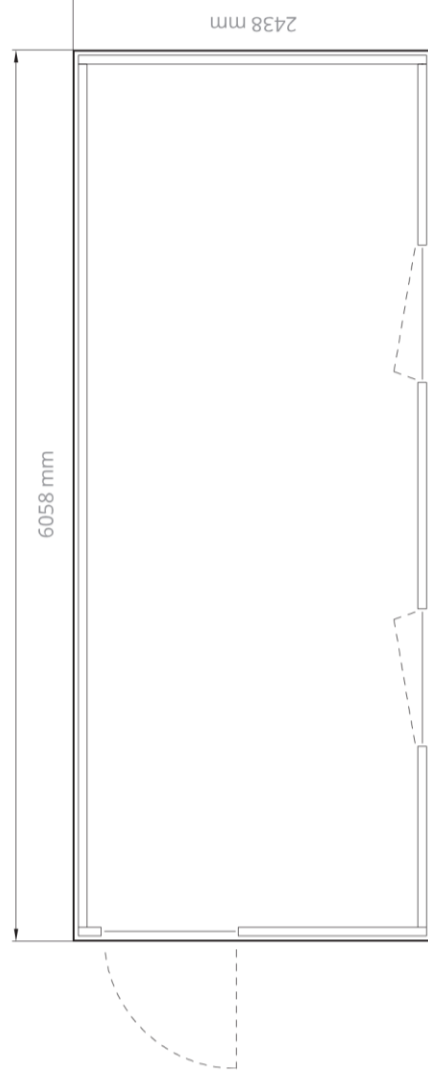
EUROMODUL

# PROJECT BLUEPRINT

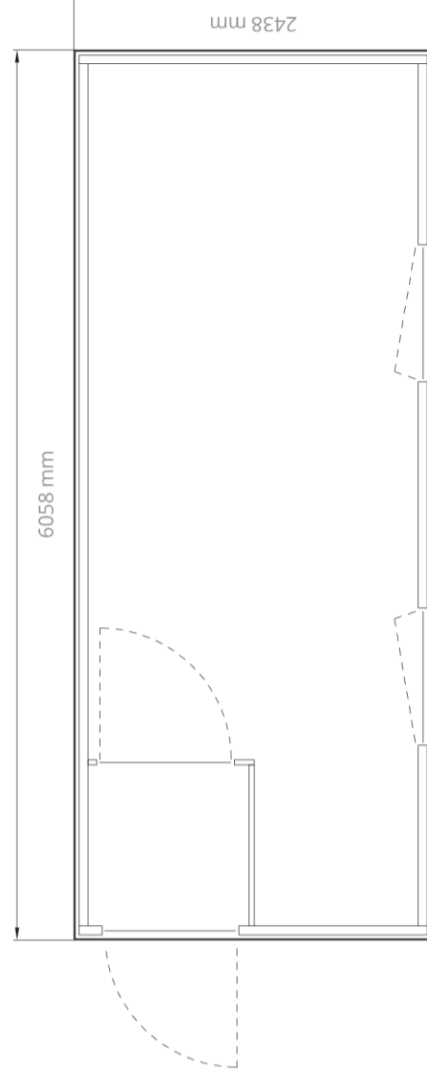
These model designs are available in the **Premium, Eurostandard** and **Standard** versions, this is just a small part of our entire offer.

We base our production on custom-made solutions. If you have more complex demands than those we offer, please feel free to contact us.

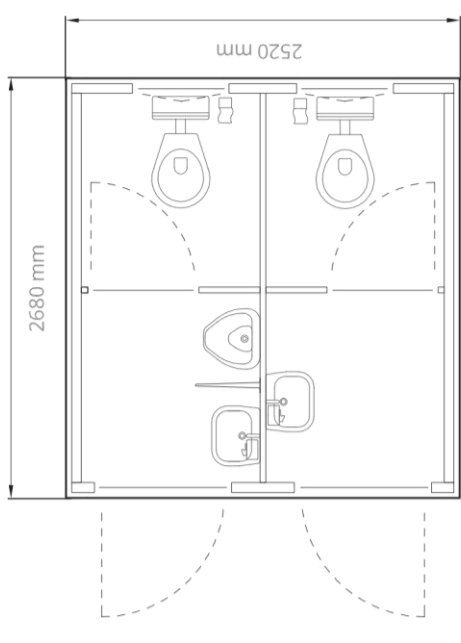
1 OFFICE CONTAINER  
TYPE 1102



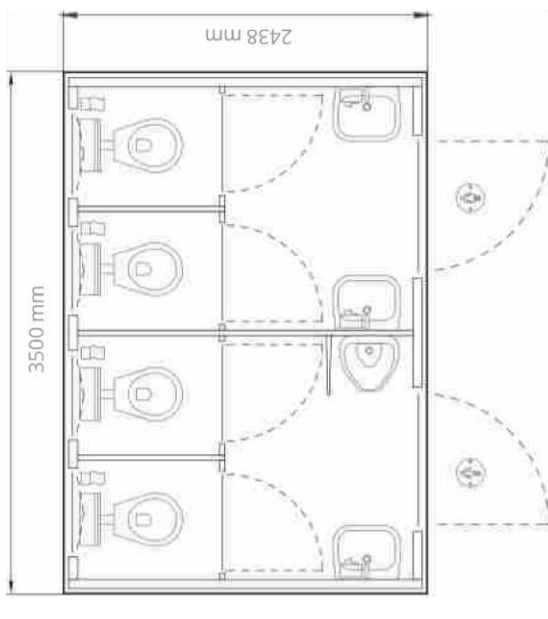
2 OFFICE CONTAINER  
TYPE 1103



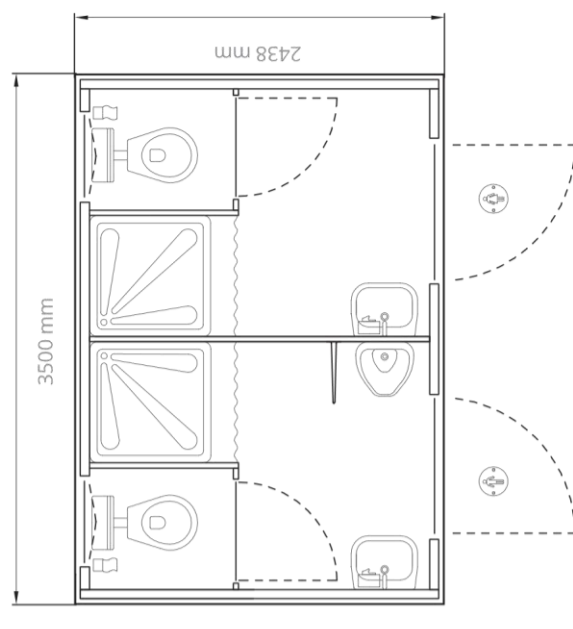
5 TOILET CONTAINER  
TYPE 1173



6 TOILET CONTAINER  
TYPE 1174-1



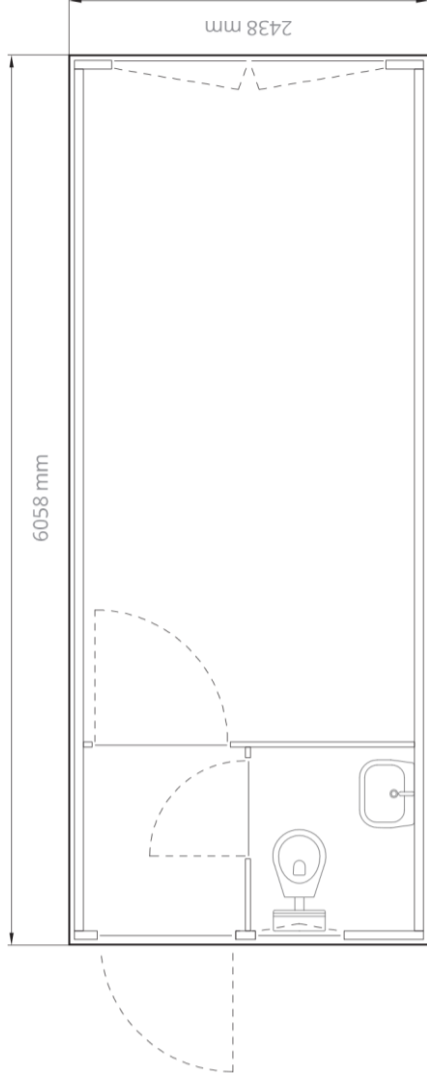
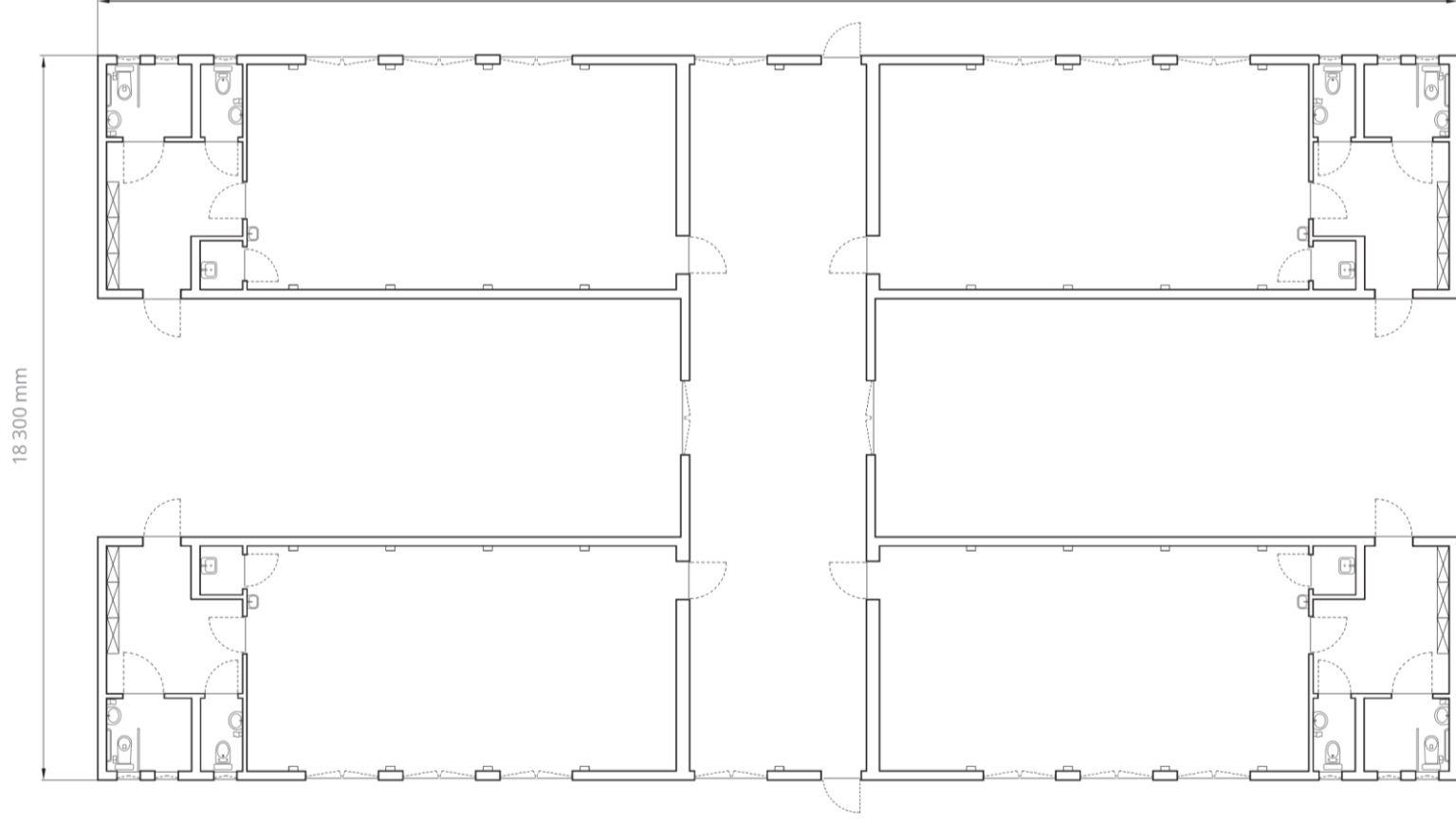
7 TOILET CONTAINER  
TYPE 1174-2



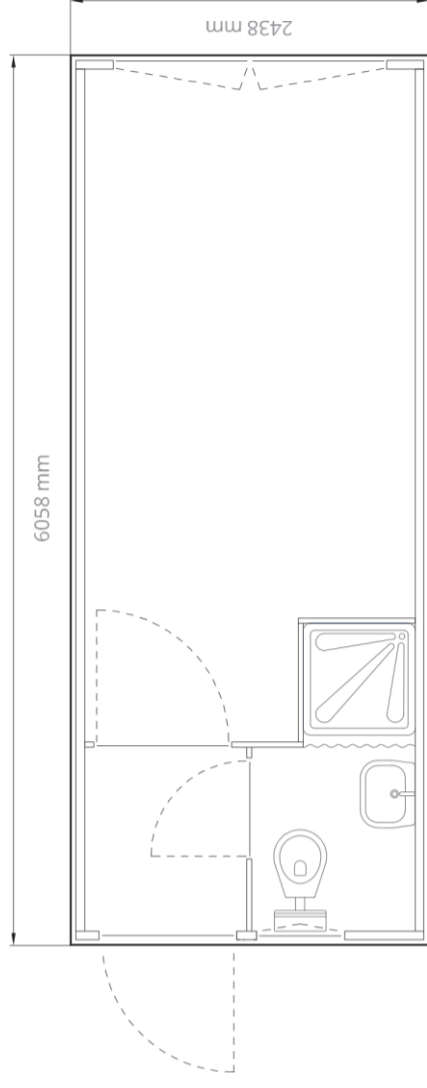


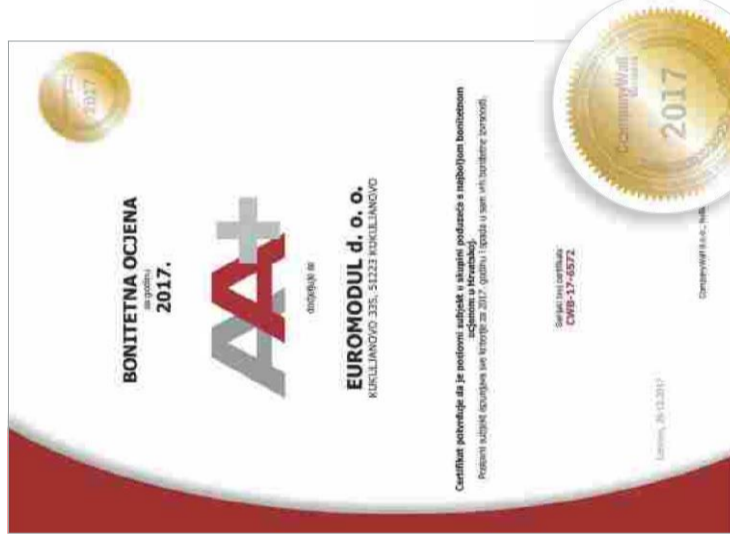
10 PROJECT  
SCHOOL KOPAVOGUR

3 OFFICE CONTAINER WITH SANITARY SPACE  
TYPE 1105

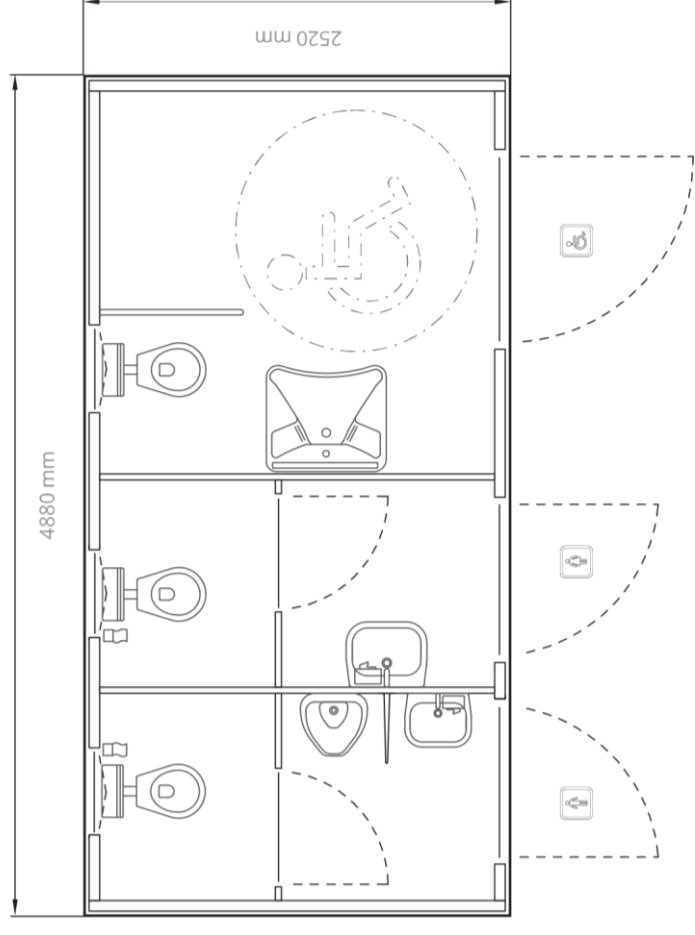


4 OFFICE CONTAINER WITH SANITARY SPACE  
TYPE 1106

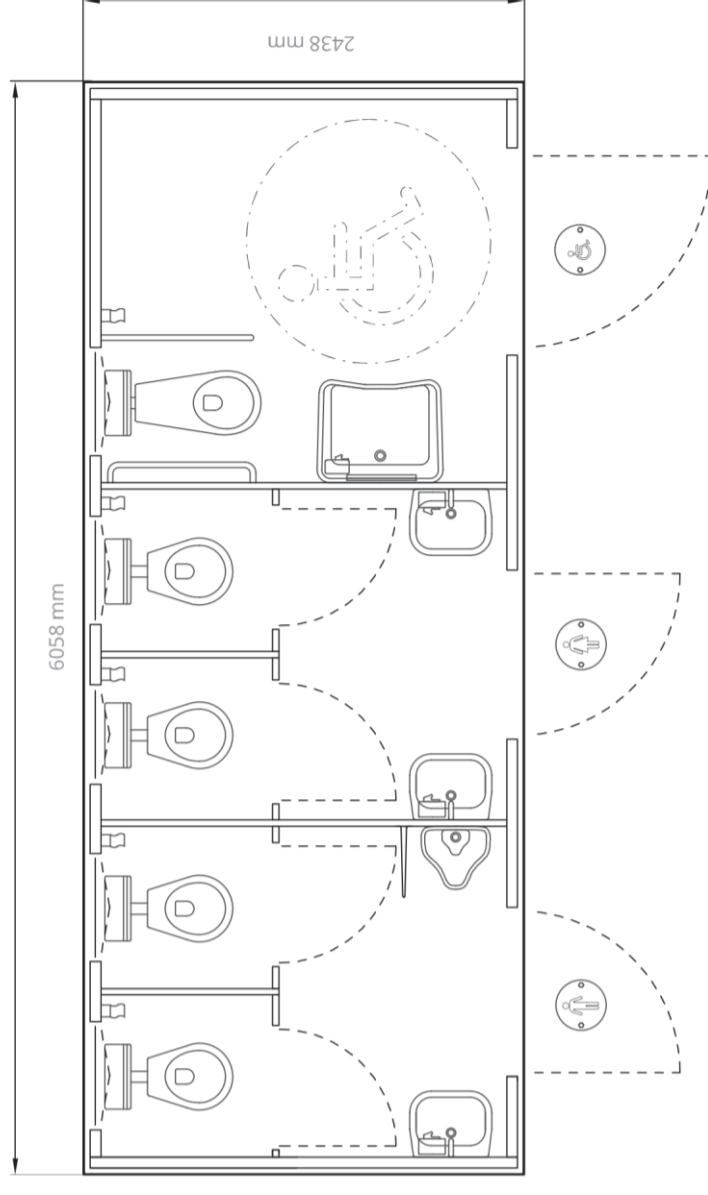




8 TOILET CONTAINER  
TYPE 1175



9 TOILET CONTAINER  
TYPE 1176



11 PROJECT KINDERGARTEN WEININGEN

